



**WHERE
HOPE
LIVES**





YOUNG ADULTS PROGRAMS SERVING 18-26 YEARS OLD

Located at 31st and Grand Avenues with multiple programs

30 women's beds, 16 men's beds, Emergency Shelter for 2 families and 6 individuals

Serving individuals who have aged out of foster care, experienced sexual exploitation, crisis pregnancy, and more

24hour Hotline (602)516-0033 www.wherhopelives.org



TEEN CAMPUS SERVING 13-17 YEARS OLD

Undisclosed location in the west valley with 8 beds

Contact referrals@streetlightusa.org or (602)666-1885
www.wherhopelives.org



CHILDREN'S CAMPUS SERVING 4-15 YEARS OLD

Undisclosed location in the west valley with 8 beds

Contact Janet Olson (602)881-8256 for referrals
www.wherhopelives.org



FAMILY CARE MODEL & MENTOR TEAMS

A group of volunteers helping navigate transition back into the community focusing on Transportation, finance, education, careers, housing and more



INCENTIVE BASED PROGRAMS



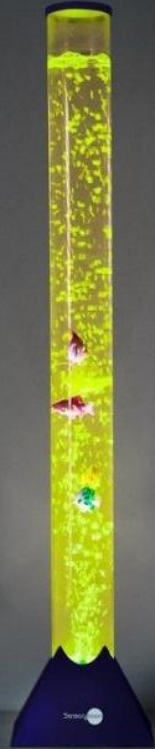
Trauma Informed Sensory Modulation

Neurosensory Modulation

Light, Sound, Touch

Anchor Points

Advanced In-house Services







Lighting Sensory

Independent Spaces

Privacy Curtains

Aromatherapy

**Trauma Informed
Dream Rooms**



A modern living room with a large potted plant on the left, a TV mounted on the wall, a dining table with two chairs, and a zebra print rug in the foreground. The room has light-colored walls and a white ceiling with recessed lighting. A doorway in the background leads to another room.

Sound Sensory

Living Plants

**Trauma Informed
Dream Rooms**

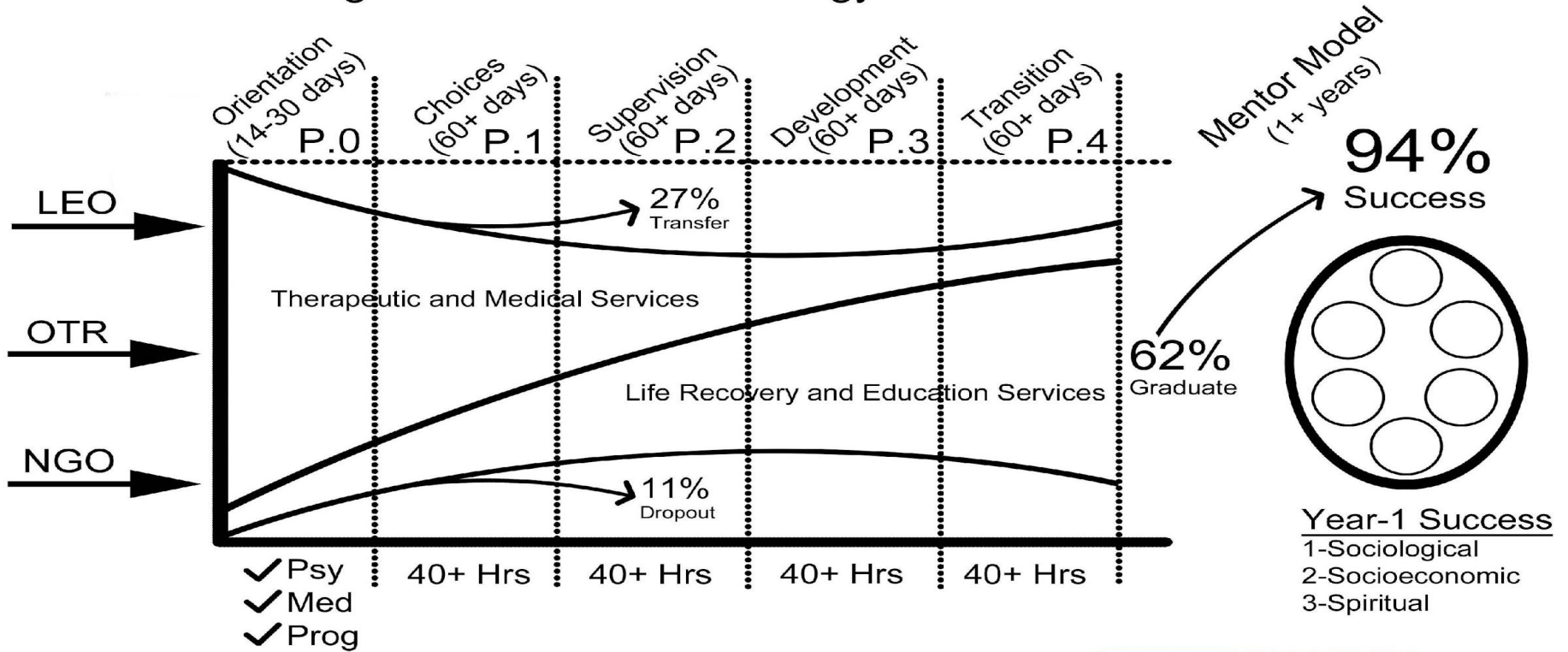
Tactile Textures

Services Provided Across Our Campuses...

- Medical and Behavioral Health Clinics
- Trauma Healing Individual & Group Therapy
- Vision and Dental Care
- Clothing Boutique
- Private High School, GED, and College Prep School
- Psychiatric Care Services
- EMDR (eye movement desensitization and reprocessing)
- Pastoral Care Services
- Substance Use Support
- Eating and Substance Abuse Disorder Behavior Support
- Accelerated Resolution Therapy
- Therapeutic Music Classes
- Equine Facilitated Coping Skills Groups
- Healing Art Series
- Emotional Support Pet Groups
- Sleep Hygiene Curriculum
- Life Skills Group Classes
- Trauma-Informed Academic Support
- Trauma Healing Movement Classes



Residential Program Service Methodology



*2019 Data From Similar Womens Program





SINCE 2008, OVER 5,400
SURVIVORS HAVE BEEN SERVED

Collaborative Process



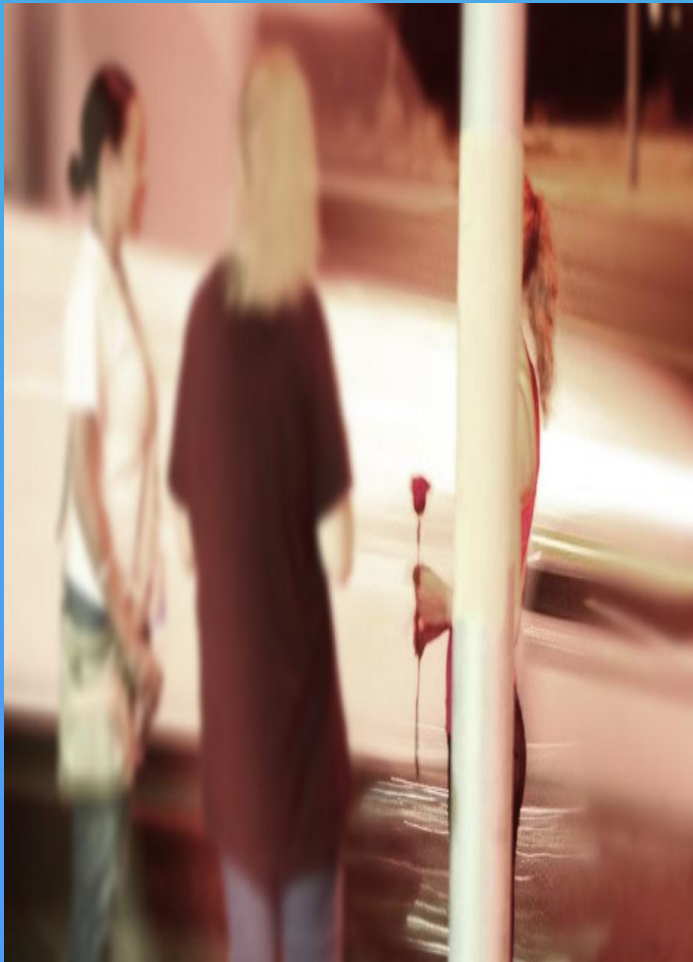
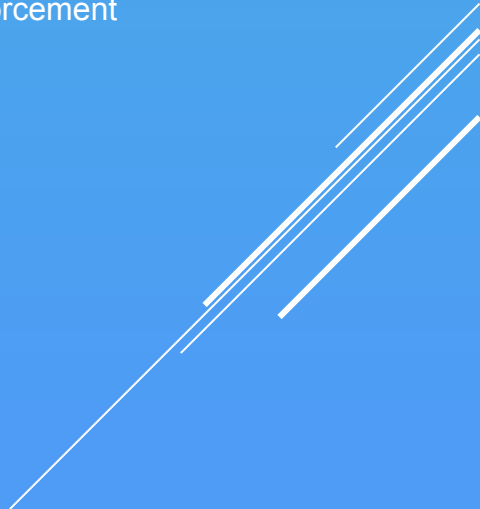
OUTREACH

-Local Sting Operations with law enforcement

-Drop In Center

-Peoria Homeless Outreach

-Fountain





- ▶ Creating phone with database to follow incentive based programming.
- ▶ Limited access to contacts, apps and internet.
- ▶ Automatic curfews
- ▶ Mental Health Checks
- ▶ P1- 1 contact, 4apps phone usage for 3-8:30pm
- ▶ P2- 3 contacts, 6 apps phone usage for 12-8:30pm
- ▶ P3 – 5 contacts, 8 apps, access to internet, phone usage 9am-8:30pm
- ▶ P4 – Full access

PARTNERSHIP WITH CYBERDIVE

SHAUNA SEXTON
EXECUTIVE DIRECTOR
YOUNG ADULTS PROGRAMS
SHAUNA@WHEREHOPELIVES.ORG
(602)703-6362
WWW.WHEREHOPELIVES.ORG

A decorative graphic consisting of several parallel white lines of varying lengths, slanted diagonally from the bottom right towards the top right, located in the lower right quadrant of the image.

